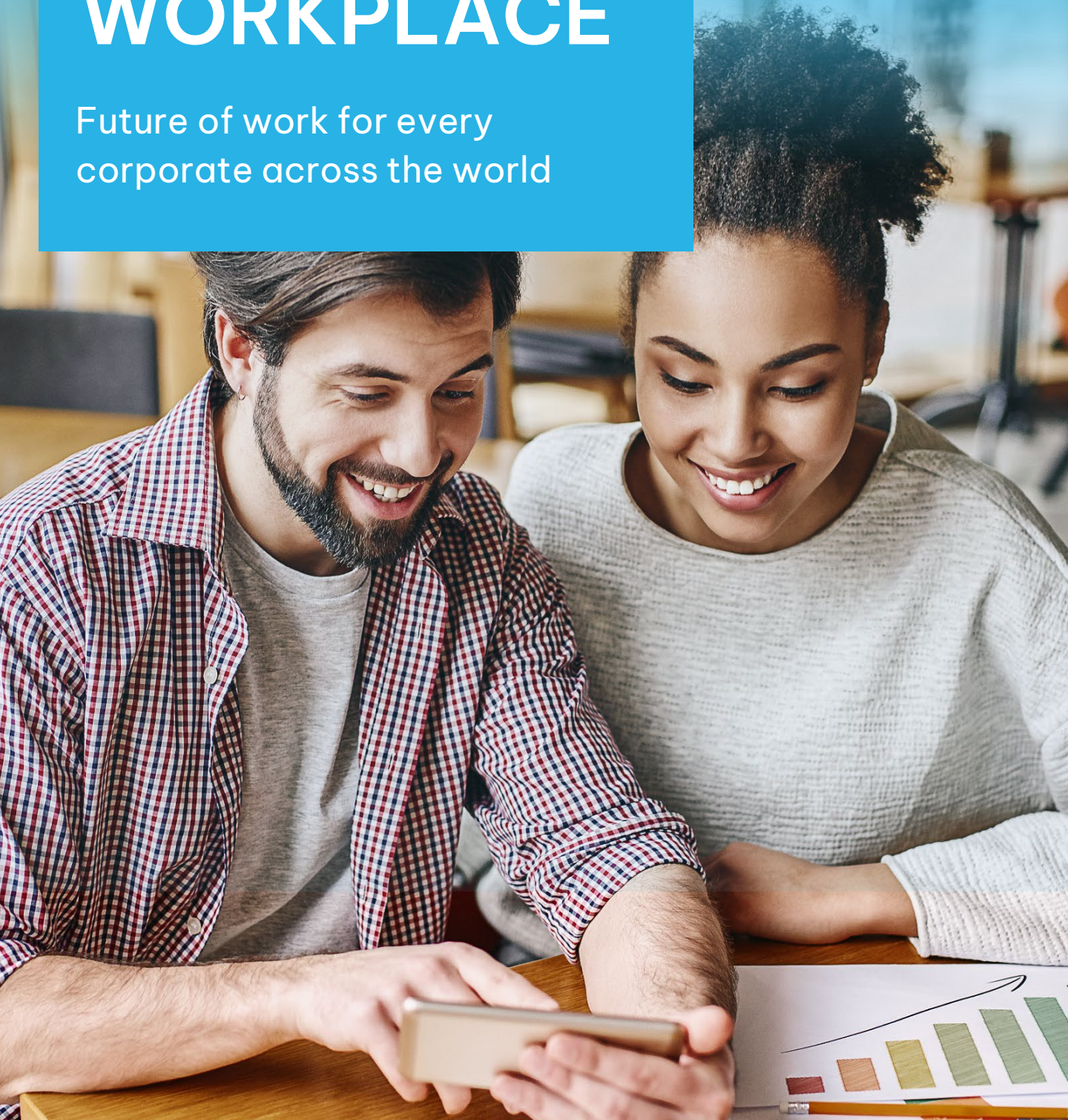




# MODERN WORKPLACE

Future of work for every  
corporate across the world





# Why is the Modern Workplace Becoming More Essential?

Video conferencing, screen sharing, and text messages are not new words in today's office setup. The outspread of the COVID-19 pandemic has forced organisations to operate in a remote mode with a majority of the workforce operating from home. We have always been talking about workplace flexibility and the work from home concept was not a farfetched goal but the whole corona virus situation has quite accentuated that process. It initially put some pressure on organisations but gradually, corporates are getting back on track. Work from home will be a permanent fixture of the modern workplace scenario.

Also, there are many organisations who have already hopped on the digital transformation bandwagon are already halfway in enhancing the customer experience. But to continue delivering amicable customer experiences it is necessary for the corporates to empower their employees with the appropriate set of secured productivity tools and applications. Inclusion of these tools in the working environment indicates structuring of a modern workplace.



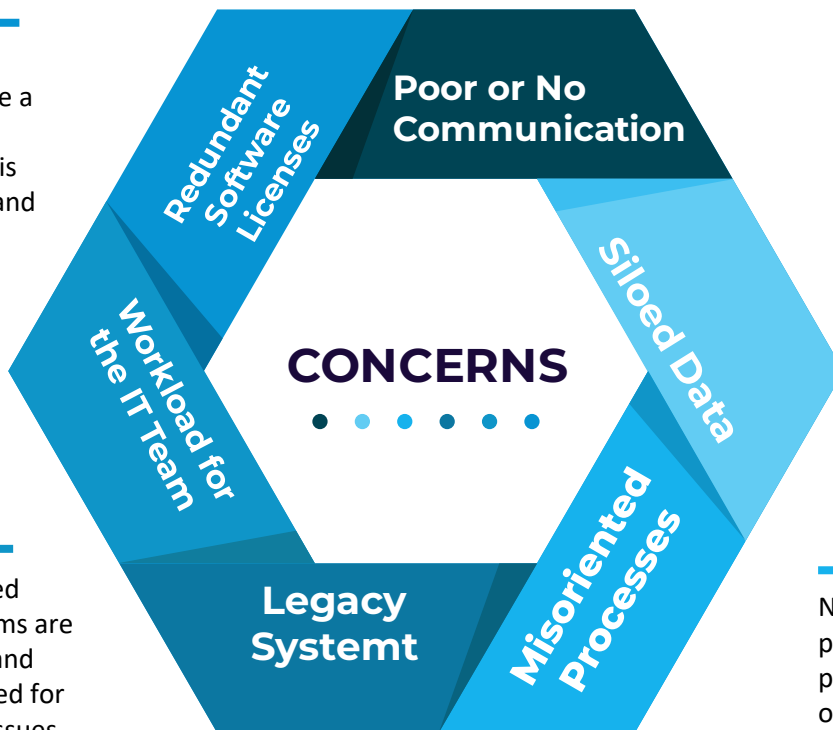
# Concerns of a Traditional Workplace

A modern workplace is a combination of physical and technological space which pretty much eliminates all the concerns of a traditional workplace.

Information exchange happens over different channels which certainly indicates lack of visibility and cross communication.

Legacy software applications have a typical licensing structure which is hard to understand and sometimes renew.

There are multiple systems working on a single process which makes it difficult for organisations to extract and analyse the required data



With the outdated machines, IT teams are over-stretched, and they are contacted for the most trivial issues

Numerous systems performing a single process eats up a lot of time and effort. Also, some processes are being performed manually which is again a waste of productive time.

Traditional systems cannot be accessed on smartphones or have difficult interfaces to use.

# How Technology Plays a Major Role in Designing a Modern Workplace

There are several factors that drives the adoption of modern workplace. Increased proportion of millennials in the workforce, technology and transparency are the most prominent factors. The young generation demands for workplace flexibility and believes that mobility and flexibility is the key to productivity. This nature calls for the inclusion of the latest technologies in the workplace and giving it a modern spin. The transparency also plays a major role in urging the traditional corporates to adopt the modern workplace setup.

With the employees working across the globe, transparency in operations and ethics play a crucial role.

Both factors are backed by technology. Technology is changing the face of future work. With technologies such as AI and machine learning finely embedded in workplaces, manual work is reduced to a great extent and people are hired for the job roles which revolves around being strategic and creative. The organisations will value those employees who can adapt to new technology and learn new skills and continuously upgrade themselves. The technology combinations such as cloud computing, artificial intelligence and automation (business process automation and robotic process automation) will play a key role in shaping the future workplace. Well, when we are nurturing the hopes of structuring a modern workplace, there are many concerns looming over organisations and one of them is security and the other is the reliability of the tools and applications.



# Which Microsoft Products can Help you Create a Modern Workplace?

Microsoft offers a suite of productivity applications and tools that allow you to design a fully functional and reliable modern workplace. Let's go through the applications that you would like to include in your modern workplace.

## Microsoft Office 365 + Security E6

Microsoft Office 365 stands as a base for the collaboration structure of your modern workplace since it is packed with several applications such as email, video, voice, IM, Skype for Business, Teams, SharePoint, OneDrive and others. There are other applications such as Planner, Delve, Flow, Sway and many others in the Microsoft Office 365 suite which help you have a complete insight about your business processes. The security E3 opens up the world of secured mobility for your mobile device. Also, the license gives access to mobile device management capabilities and Intune to you to monitor remote devices.



## Microsoft Team and SharePoint

Microsoft Teams and SharePoint, allows you to communicate and collaborate over text messages, calls or documents with your internal and external teams. You can view, edit or upload the documents on a SharePoint portal for your superiors to give feedback or your team members to make changes or additions to it. You can discuss the changes made in the document over a Teams call or chat. These features enhance productivity and boost morale.



## Azure Active Directory

Azure Active Directory is like a security shield for your modern workspace since it identifies every Microsoft 365 application based in Microsoft Cloud. You have single secured access to all the applications. The multi-factor authentication is implied therefore, you don't have to worry about any unauthorised personnel accessing your confidential data.



## Microsoft Power Automate

With Microsoft Power Automate you can deploy Business Process Automation for your operations and processes. Automation of manual and repetitive tasks allows you to give time to employees to think and strategise. You can use AI capabilities to automate tasks and integrate the same with Google Analytics, Twitter, MailChimp and other applications.



# How the Microsoft Suite Helps you Tailor a Modern Workplace

With Microsoft products, you can unlock a set of capabilities and empower your employees to function properly



## Seamless Collaboration

Your business teams are certainly dispersed and some of them are working remotely. Also, the current work culture has shifted from a me centric one to we centric, where people tend to form teams and solve problems after brainstorming sessions. By using the Microsoft products, the teams can collaborate with each other, share real-time updates and benefit from digital transformation.



## Mobility

The nature of work might be for employees that they have to use multiple devices for completing their tasks. With Microsoft products, you can offer seamless mobility experiences to your employees and ensure that they are able to create amicable experience for your customers. All the devices can be monitored and managed by Microsoft Intune and hence you can keep your data security concerns at bay



## Security

Microsoft products such as Intune, Azure Active Directory and Windows Information Protection identifies applications, data and devices enabling you to keep the security intact. Furthermore, Microsoft 365 offers threat intelligence which allows you to have complete insight about all the security events. Microsoft offers big data analytics and machine learning to determine the behaviour of security attacks and allows you to prepare your team for remedial measures



## Integration with Third Party Applications

Microsoft Office 365 applications are based in cloud and therefore it is easy for you to integrate it with other systems and software. For example, you can integrate your Office 365 app with a CRM or an accounting solution. The integration is simple allowing you to move the data and analyse the same from the desired application.



## Scalability

Microsoft allows you to use the application as per your requirement. You can renew the licenses of applications on a per month basis. With the monthly license you get the storage, desktop Office 10 programs, back-end platform and Windows 10. In this manner, you can have the latest software without having to invest regularly in it.



# The Closing Note

This gives you a glimpse of how you can use technology to design your modern workplace. But technology is not the only captain of your modern workplace ship, appropriate culture and values in place shares equal responsibility of sailing your ship. You need to build a culture where there is proper two-way communication, strong leadership and a clear vision of your company's goals amongst your employees.



## GET IN TOUCH



CALL - 1300 EXIGOTECH (394 468) | Connect Sales - [sales@exigotech.com.au](mailto:sales@exigotech.com.au) | Find Us - [www.exigotech.co](http://www.exigotech.co)